



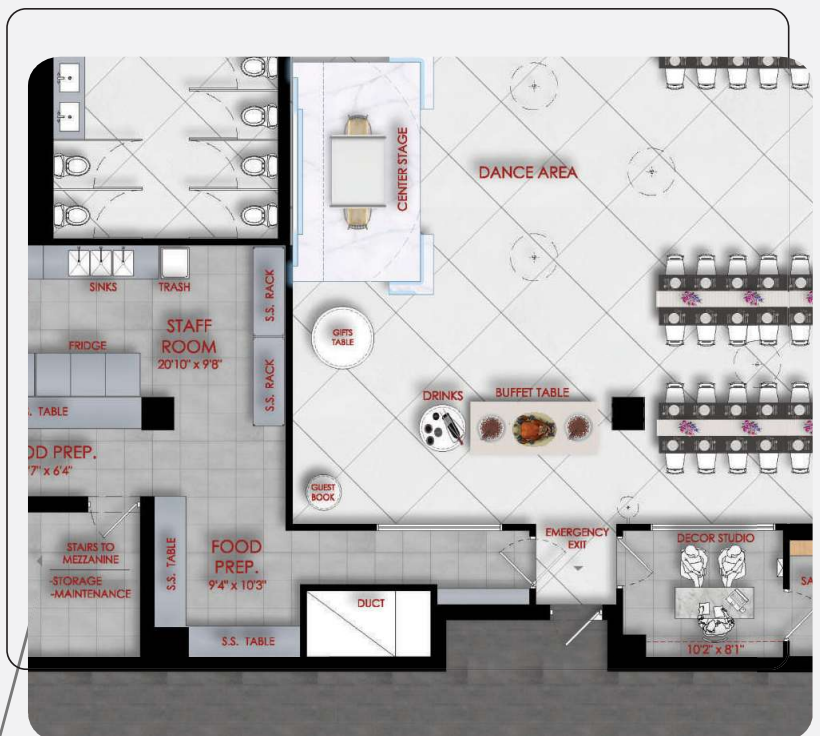
Crystal Ballroom

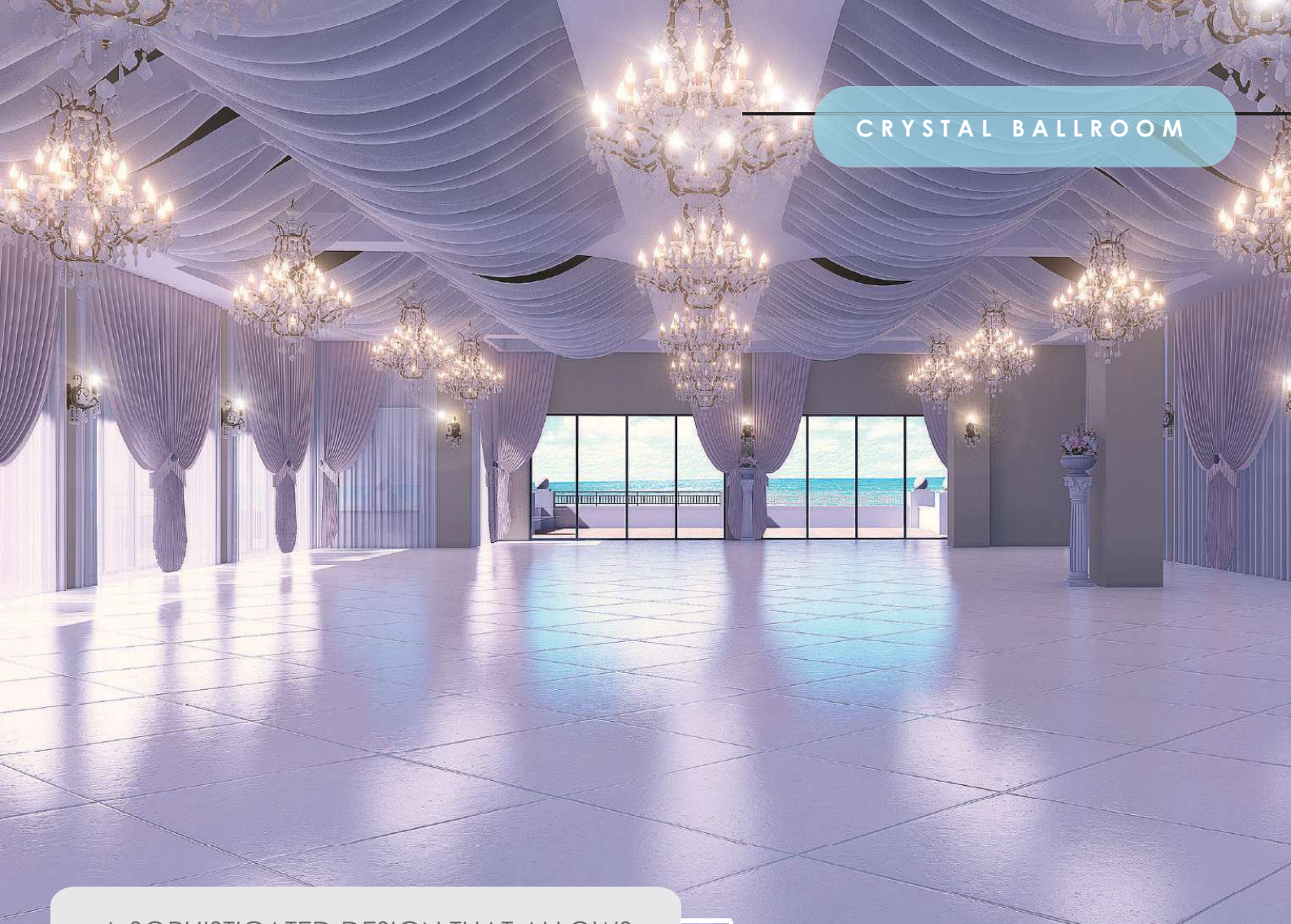
LOCATION: BEACH PLACE | **CLIENT:** ALBERTO VALDES

Crystal Ballroom at Beach Place is a sophisticated event venue designed to blend elegance with functionality. Located in a prime coastal setting, this project highlights Florida DIB Corp's expertise in creating versatile spaces with seamless indoor-outdoor integration. The design features expansive glass walls, refined interiors, and state-of-the-art amenities, making it an iconic destination for gatherings and celebrations.



FLOOR PLAN





CRYSTAL BALLROOM

A SOPHISTICATED DESIGN THAT ALLOWS
UNIQUE AND ELEGANT CUSTOMIZATIONS

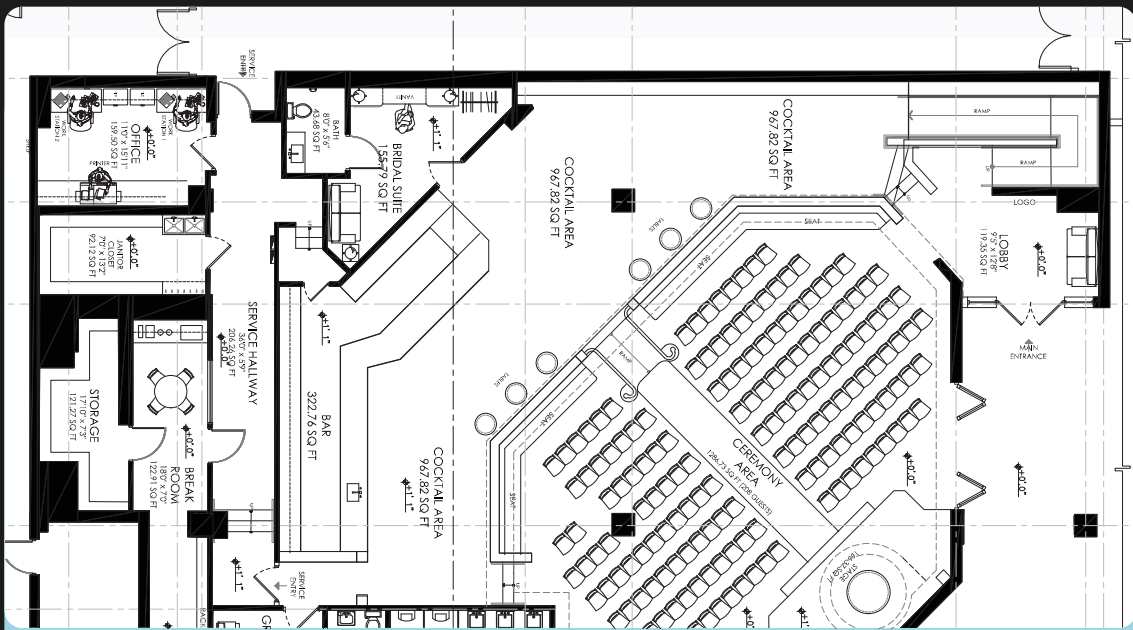




Ceremonial Altar

The ceremonial altar at the Crystal Ballroom is a masterpiece of timeless elegance and romantic design. Framed by graceful drapery and sparkling crystal chandeliers, it showcases a refined architectural design that enhances its elegance and functionality.

Key elements include gracefully crafted pillars, sleek flooring that guides the bride's path, and the subtle elevation provided by the meticulously designed stairs.



CRYSTAL BALLROOM

Timeless Elegance in Architectural Design

Every detail is thoughtfully crafted to reflect beauty, intimacy, and sophistication. These architectural features form the foundation of the altar, seamlessly blending style and purpose to create a timeless and sophisticated setting for special occasions.

Garden Design at Crystal Ballroom



COMMERCIAL PROJECTS



GARDEN DESIGN

The garden adjacent to the ballroom features a seamless architectural flow that extends the elegance of the interior into a breathtaking outdoor space. Elevated with sculpted balustrades, it offers an unobstructed, panoramic view of the ocean.

The use of clean, white pillars and decorative railing enhances the sophistication of the design while blending with the vibrant greenery of the lawn.

This thoughtfully crafted space provides a serene and luxurious setting, perfect for celebrations and moments of reflection by the sea.